

**Supplementary material to:**

**DOWNREGULATION OF SIRT1 IS CORRELATED TO  
UPREGULATION OF p53 AND INCREASED APOPTOSIS IN  
EPICARDIAL ADIPOSE TISSUE OF PATIENTS WITH  
CORONARY ARTERY DISEASE**

Mahdieh Khanahmadi<sup>a</sup>, Babak Manafi<sup>b</sup>, Heidar Tayebinia<sup>a</sup>, Jamshid Karimi<sup>a</sup>,  
Iraj Khodadadi<sup>a\*</sup>

<sup>a</sup> Department of Clinical Biochemistry, Faculty of Medicine, Hamadan University of  
Medical Sciences, Hamadan, Iran

<sup>b</sup> Department of Surgery, Faculty of Medicine, Hamadan University of Medical Sciences,  
Hamadan, Iran

\* **Corresponding author:** Iraj Khodadadi, Professor in Clinical Biochemistry, Department  
of Clinical Biochemistry, Faculty of Medicine, Hamadan University of Medical Sciences,  
Shahid Fahmideh Street, Hamadan-Iran. Tel: +9881 38380572; Fax: +9881 38380208.  
E-mail: [khodadadi@umsha.ac.ir](mailto:khodadadi@umsha.ac.ir); [ikhodadadi@yahoo.com](mailto:ikhodadadi@yahoo.com)

<http://dx.doi.org/10.17179/excli2020-2423>

This is an Open Access article distributed under the terms of the Creative Commons Attribution License  
(<http://creativecommons.org/licenses/by/4.0/>).

**Supplementary Table 1:** Medications used by CAD patients

Medications	Frequency N (%)
Statin	28 (80.00%)
Aspirin	29 (82.86%)
Digoxin	11 (31.43%)
Calcium channel blocker	22 (62.86%)
Beta-blocker	21 (60.00%)
ACEI/ARB	17 (48.57%)
Diuretics	10 (28.57%)
Nitrates	19 (54.29%)

All CAD patients (n = 35) were under treatment with different hypotensive and blood cholesterol lowering medications. ACEI: angiotensin converting enzyme inhibitor, N: number of patients.

**Supplementary Table 2:** Gene expression levels in control and patients with coronary artery disease.

Variable	mRNA expression fold change Median (IQR)		
	Control	CAD	p-value
<b>SIRT1</b>	0.012 (0.01)	0.006 (0.00)	<b>0.004</b>
<b>P53</b>	0.015 (0.01)	0.023 (0.02)	<b>0.014</b>
<b>Bax</b>	0.002 (0.00)	0.004 (0.00)	<b>&lt;0.001</b>
<b>Bcl2</b>	0.002 (0.00)	0.003 (0.00)	0.462
<b>Bax/Bcl2</b>	0.971 (1.26)	1.270 (3.00)	<b>0.007</b>

The results for mRNA expression levels are shown as median (IQR). CAD: coronary artery disease, IQR: interquartile range, SIRT1: Sirtuin 1.

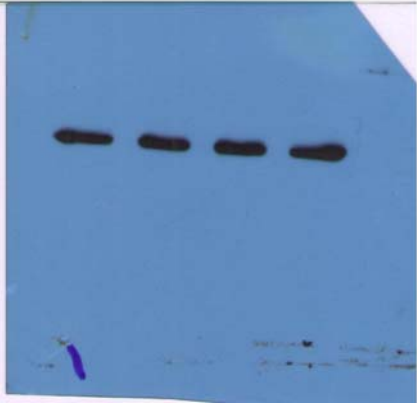
**Supplementary Table 3:** Protein expression levels in control and patients with coronary artery disease.

Variable	Protein expression fold change Median (IQR)		
	Control	CAD	p-value
<b>SIRT1</b>	1.912 (1.11)	0.997 (0.51)	<b>&lt;0.001</b>
<b>P53</b>	0.684 (0.31)	1.089 (0.41)	<b>&lt;0.001</b>

The results for protein expression levels are shown as median (IQR). CAD: coronary artery disease, IQR: interquartile range, SIRT1: Sirtuin 1.

# B-actin samples from CAD patients

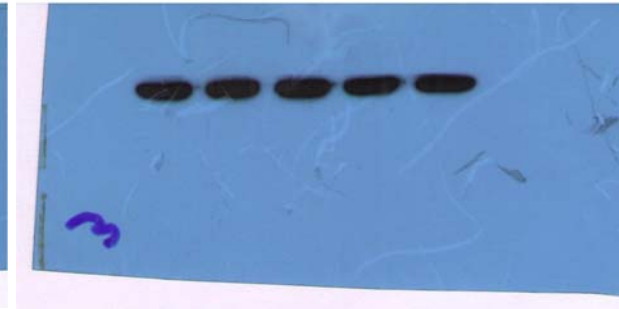
1 2 3 4



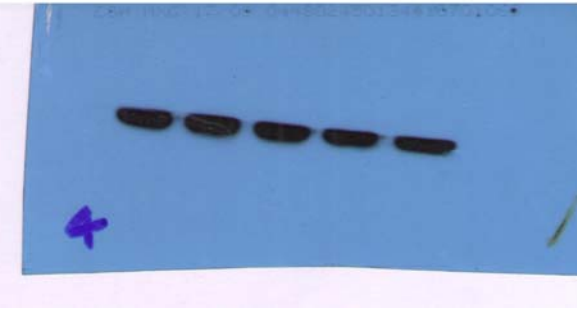
5 6 7 8



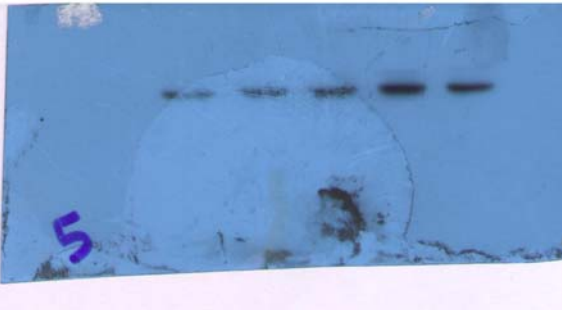
9 11 12 14 15



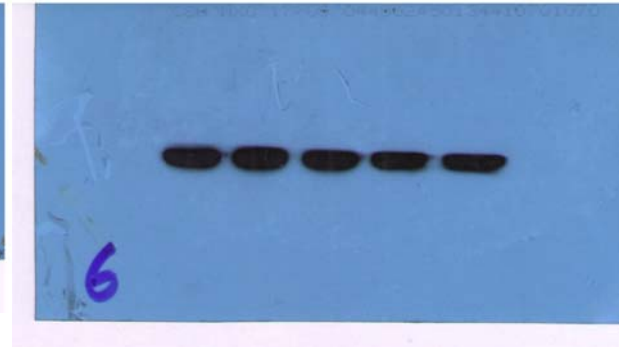
16 17 18 21 19



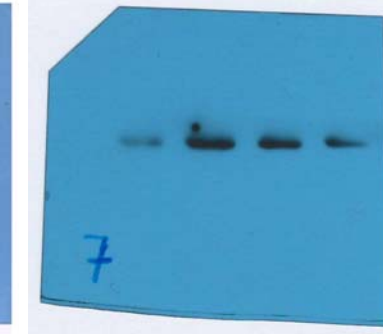
22 23 24 26 27



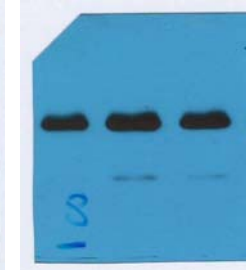
28 29 31 30 33



13 10 20 25



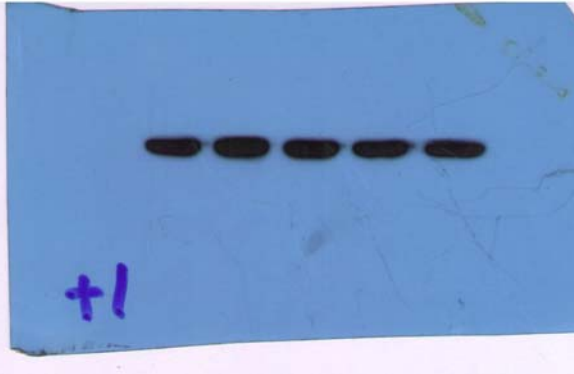
34 35 32



Lanes identified with **black color** represent samples from CAD patients.

# B-actin samples from **Control** subjects

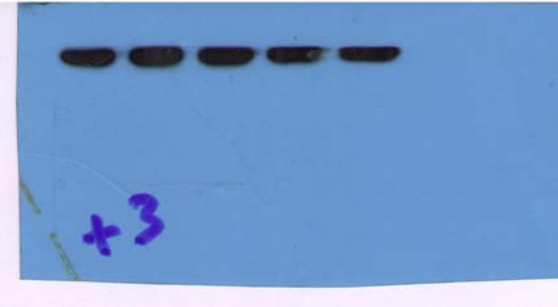
36 37 38 39 40



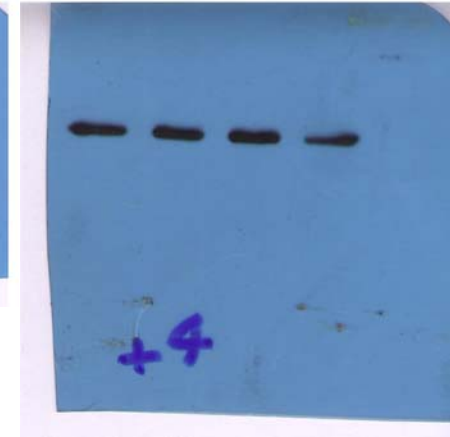
42 43 41 44



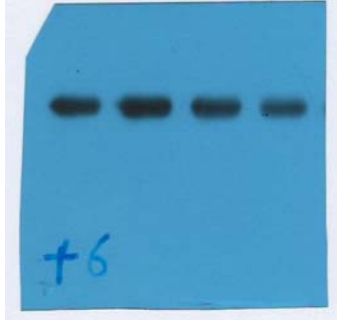
46 48 45 47 49



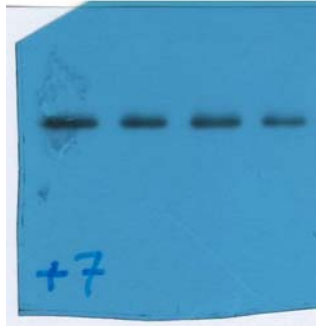
50 51 52 53



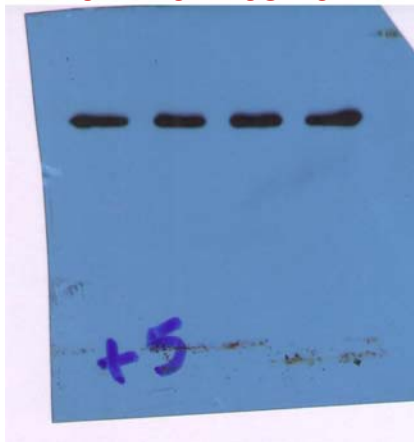
54 55 56 57



58 59 59 60



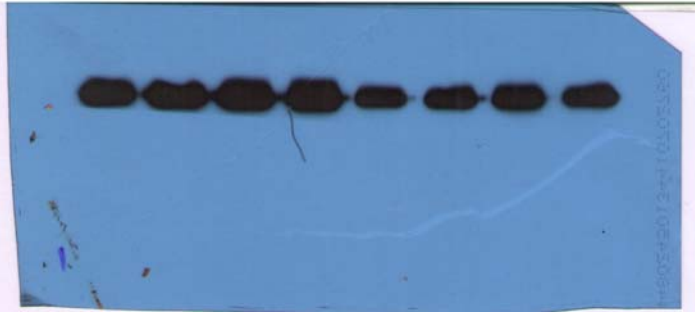
61 62 63 64



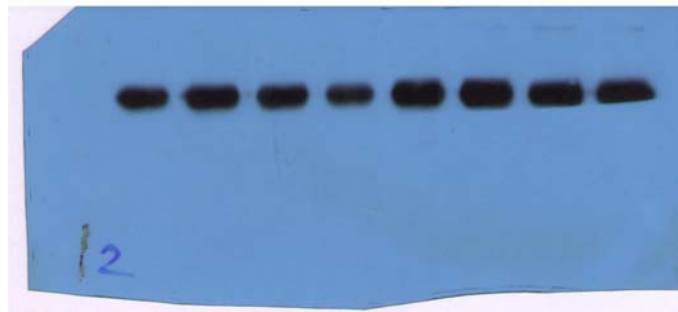
Lanes identified with **red color** represent samples from CAD patients.

# P53 samples from CAD patients

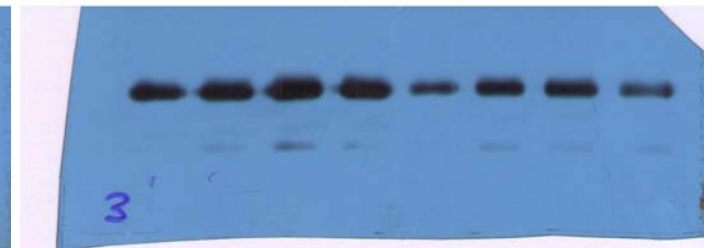
1 2 4 5 3 6 7 8



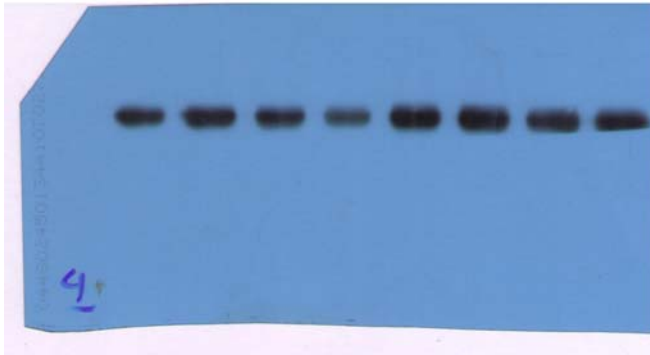
9 10 11 12 13 14 15 16



17 20 18 19 21 22 23 24



25 26 27 28 29 30 31 32

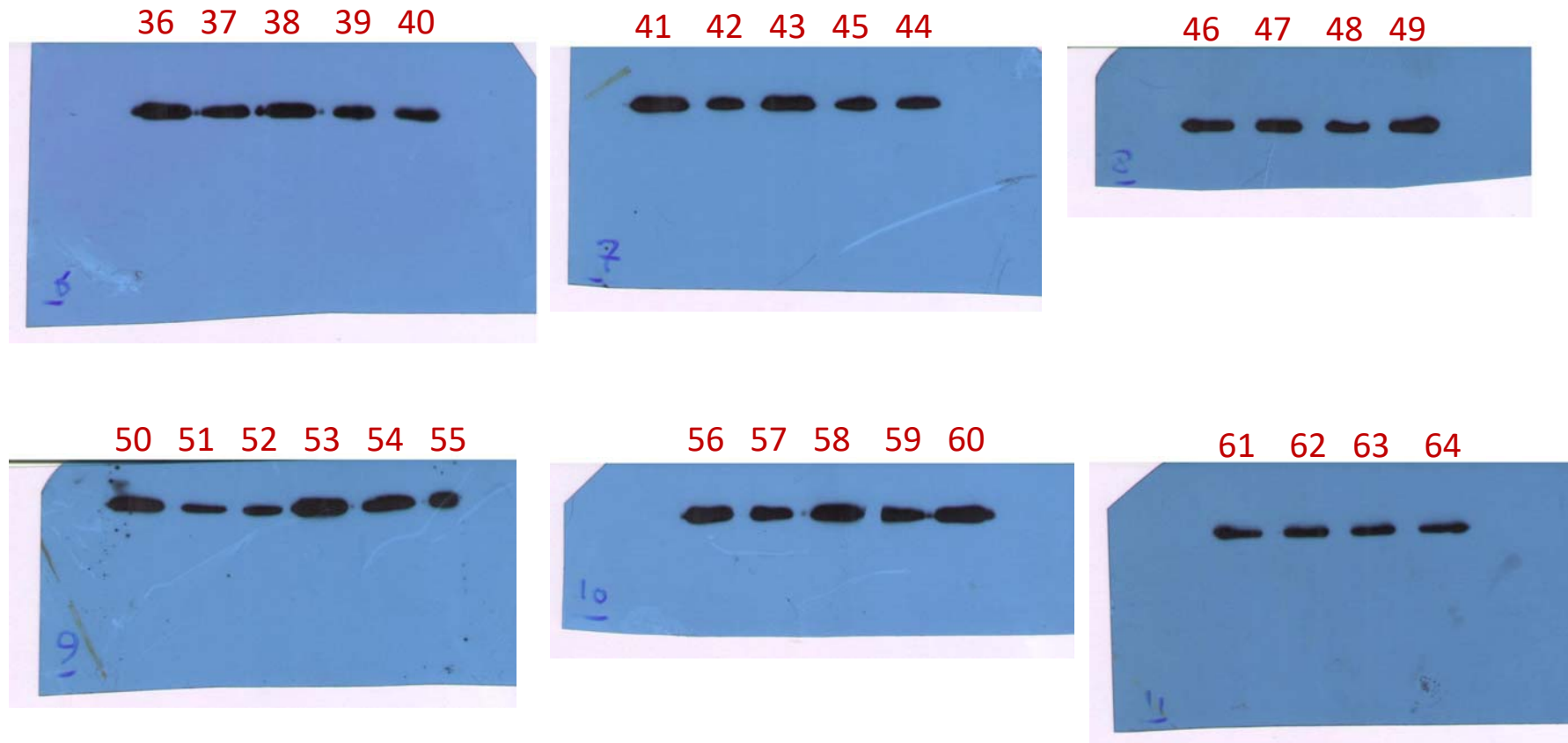


34 19



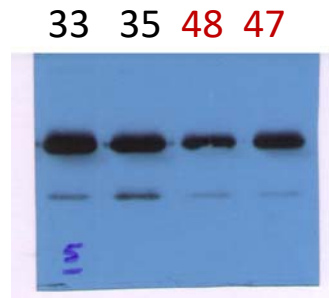
Lanes identified with **black color** represent samples from CAD patients.

# P53 samples from **Control** subjects



Lanes identified with **red color** represent samples from CAD patients.

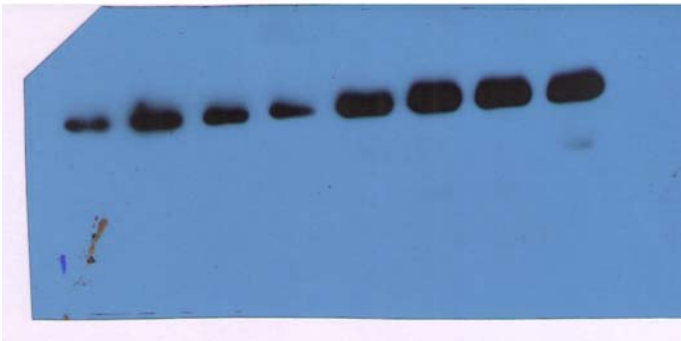
# P53 samples from CAD patients/**Control** subjects



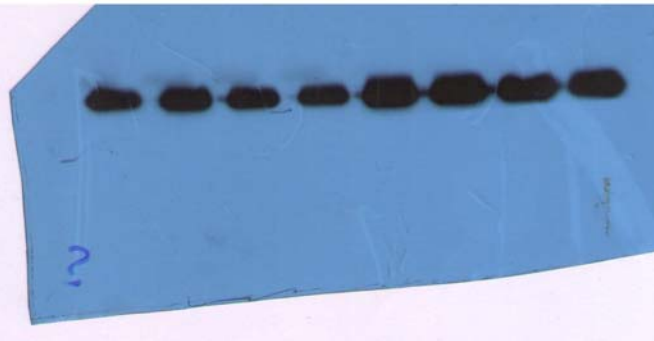
Lanes identified with **black** or **red colors** represent samples from CAD patients or control subjects, respectively

# SIRT1 samples from CAD patients/**Control** subjects

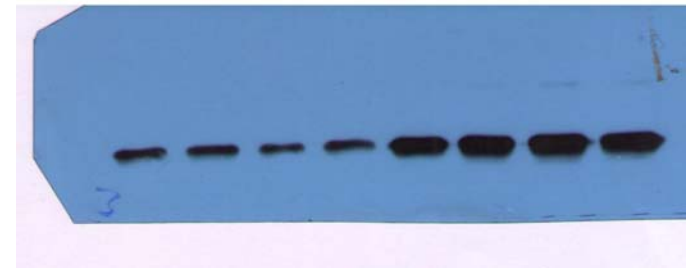
1 2 3 4 **36 37 38 39**



5 6 7 8 **40 41 42 43**



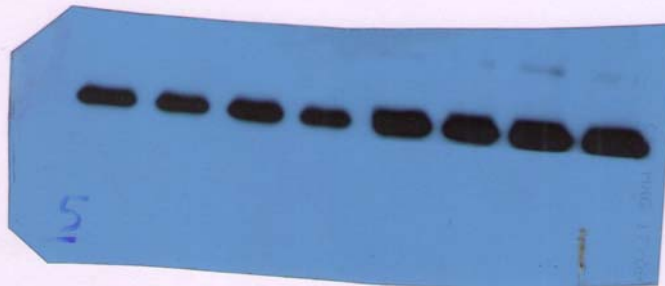
9 10 11 12 **44 45 46 47**



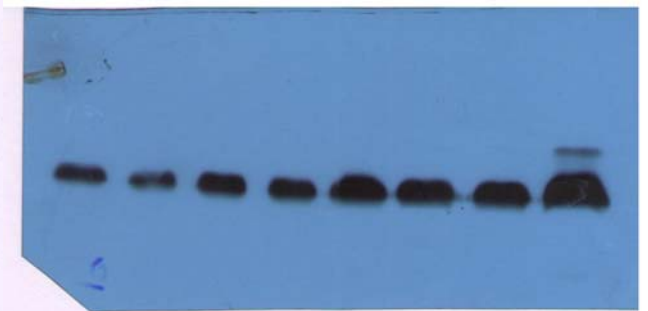
13 14 15 16 **48 49 50 51**



17 18 19 20 **52 53 55 54**



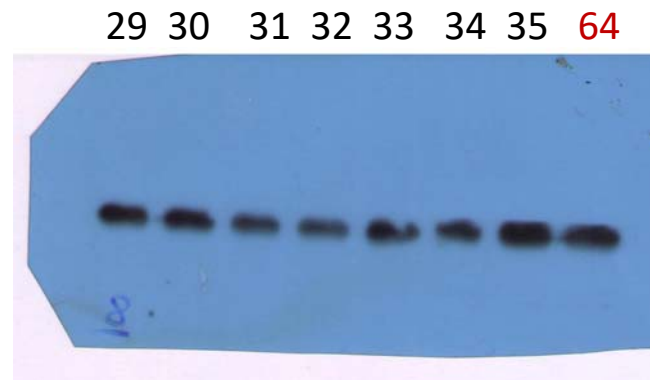
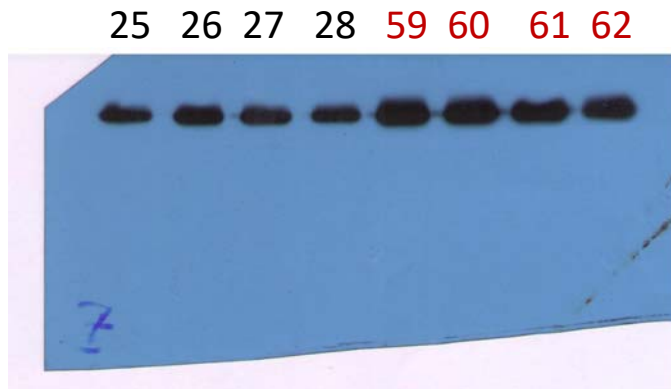
21 22 23 24 **55 56 57 58**



Lanes identified with **black** or **red colors** represent samples from CAD patients or control subjects, respectively



# SIRT1 samples from CAD patients/Control subjects



Lanes identified with **black** or **red colors** represent samples from CAD patients or control subjects, respectively